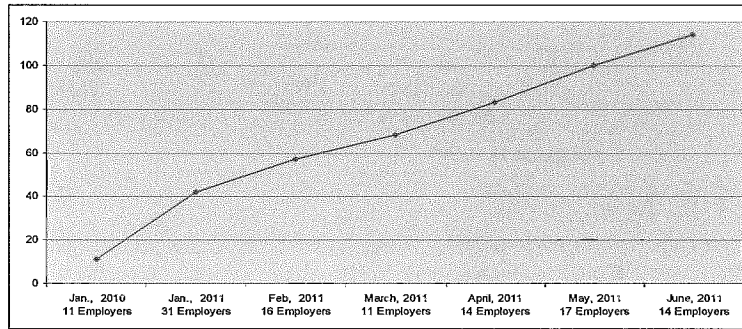


41

Utah Health Exchange - Summary of Activities Small Employer Groups May 5, 2011

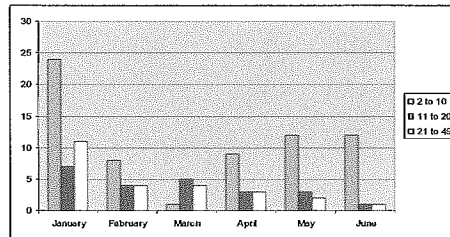
Employer Participation Continues to Grow

114 employer groups are currently enrolled in the Utah Health Exchange.
100% of the participating "2010 Pilot Groups" re-enrolled for 2011.



Utah Health Exchange - Summary of Activities Small Employer Groups

Smallest Group Size 2 employees	Average Group Size 12 employees	Largest Group Size 49 employees
---	---	---



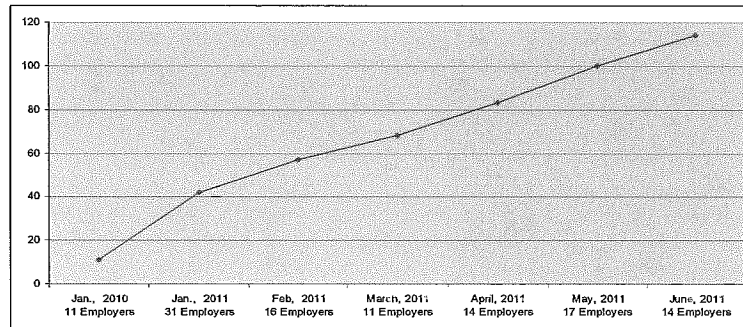
- Total employer count by group size**
- o Groups with 2 to 10 employees: 66
 - o Groups with 11 to 20 employees: 23
 - o Groups with 21+ employees: 25
 - o 25% of employer groups did not offer health for their employees prior to joining the Exchange.
 - o 94% of participating employer groups have a broker.

Utah Health Exchange - Summary of Activities Small Employer Groups

Employee Enrollment Counts

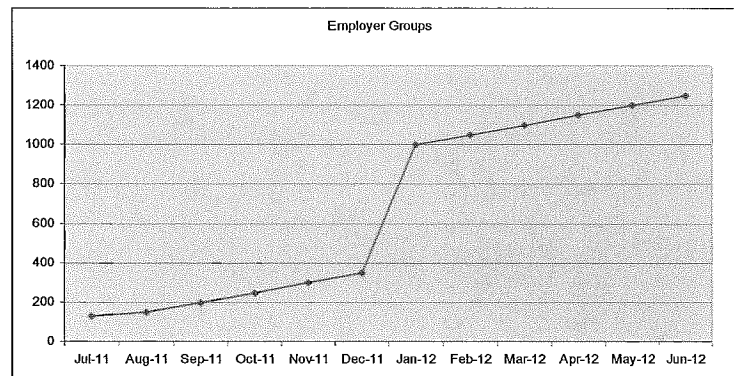
Total number of enrollees, including June 1st benefit effective date groups:

Covered lives: 2985
 Covered employees: 1035
 Covered dependents: 1950



Utah Health Exchange - Projected Growth Small Employer Groups May 5, 2011

	Jul-11	Aug-11	Sep-11	Oct-11	Nov-11	Dec-11	Jan-12	Feb-12	Mar-12	Apr-12	May-12	Jun-12
Employer Groups	130	150	200	250	300	350	1000	1050	1100	1150	1200	1250
Covered Employees	1150	1300	1450	1600	1750	1900	9000	9200	9500	10000	10,500	11000



Utah Health Exchange - Customer Service

