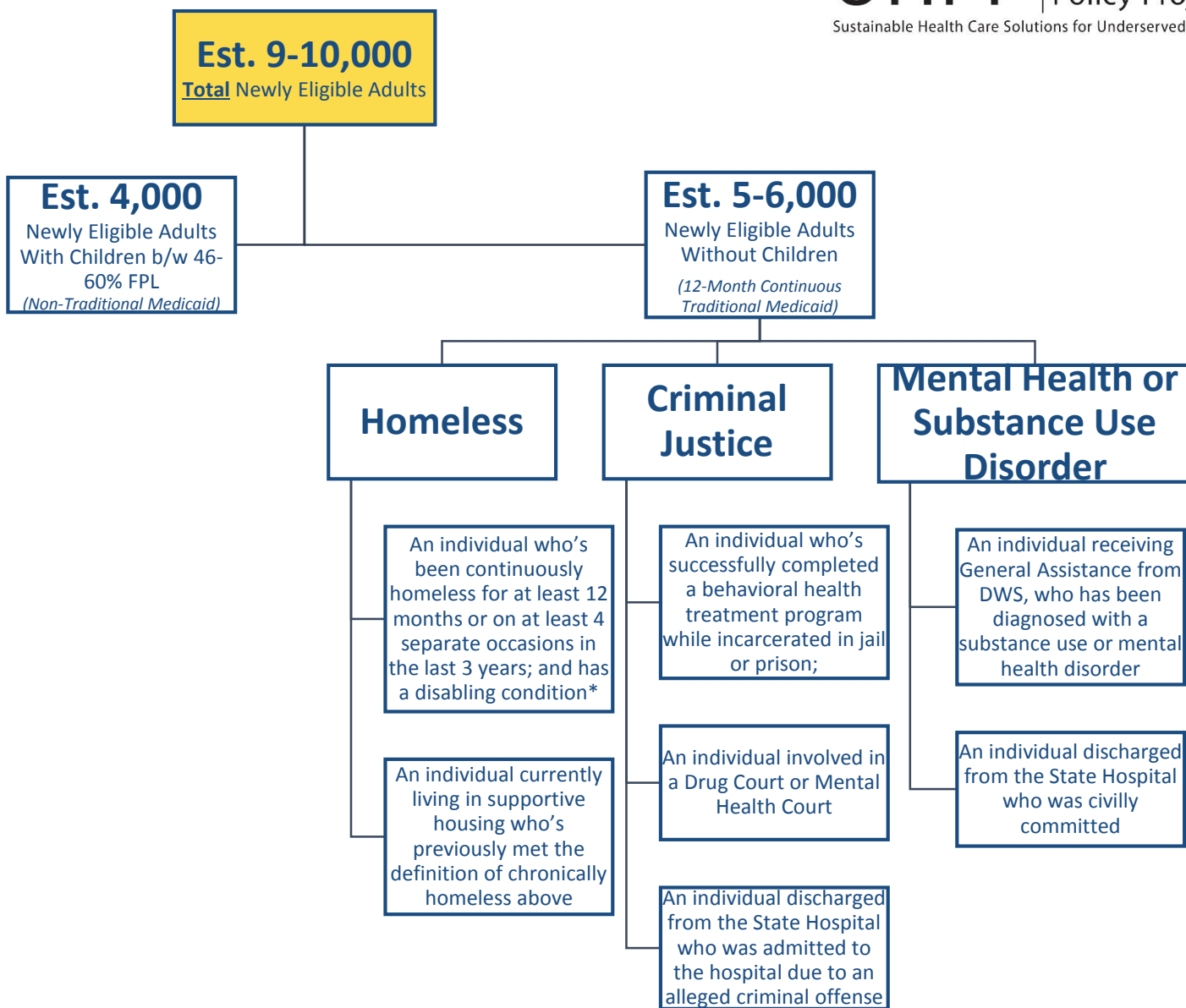
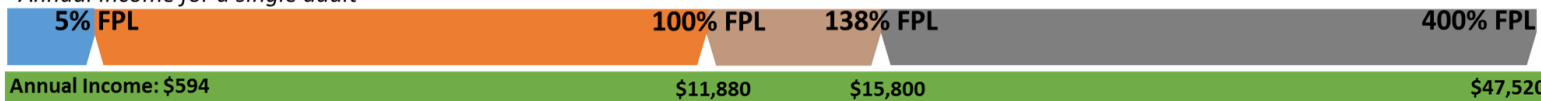


New Eligibility Requirements for Enrollment under HB437



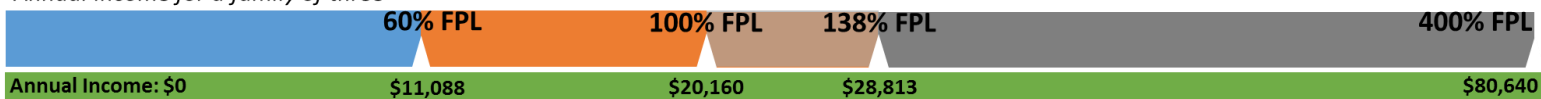
Adults without Children

Annual income for a single adult



Adults with Children

Annual income for a family of three



Medicaid Eligible

Coverage Gap

Necessary to Cover for 90/10 Match, but eligible for tax subsidies

Eligible for Tax Subsidies

*Diagnosable SUD, SMI, Developmental Disability, PTSD, Cognitive Impairments Resulting from TBI, or Chronic Illness or Disability