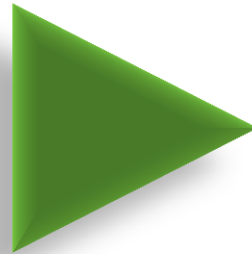
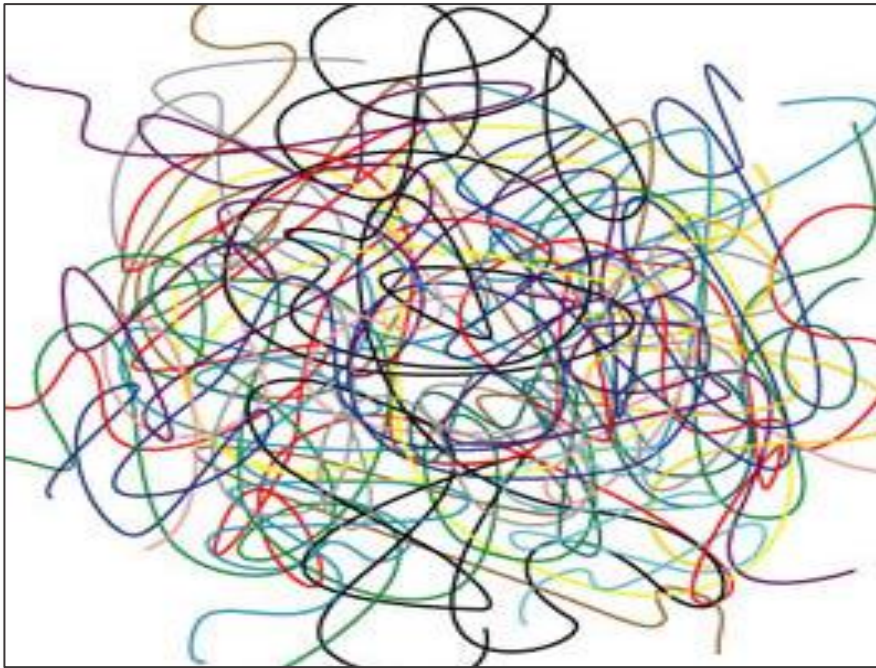
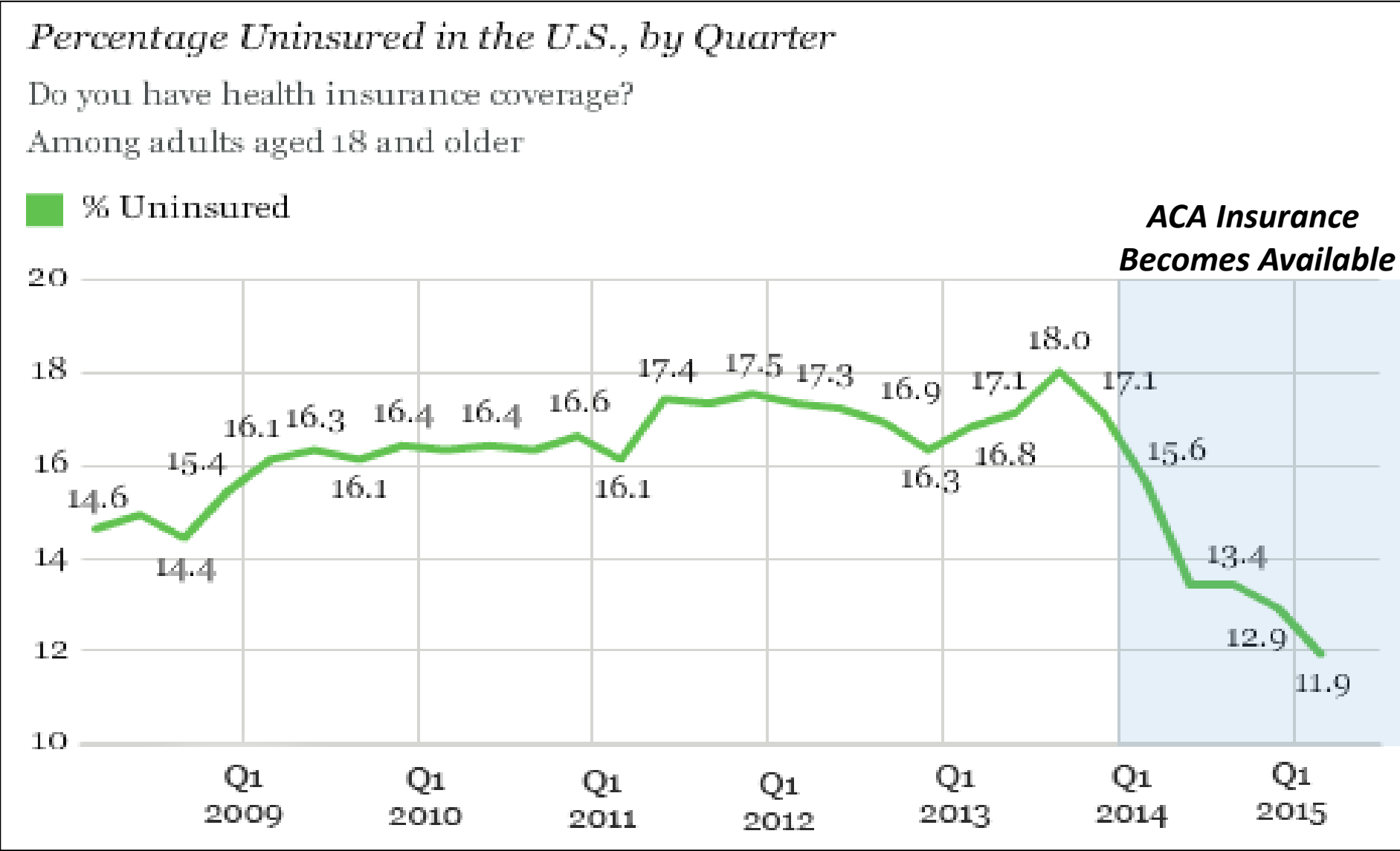


# Making Sense of Utah's Uninsured Rates



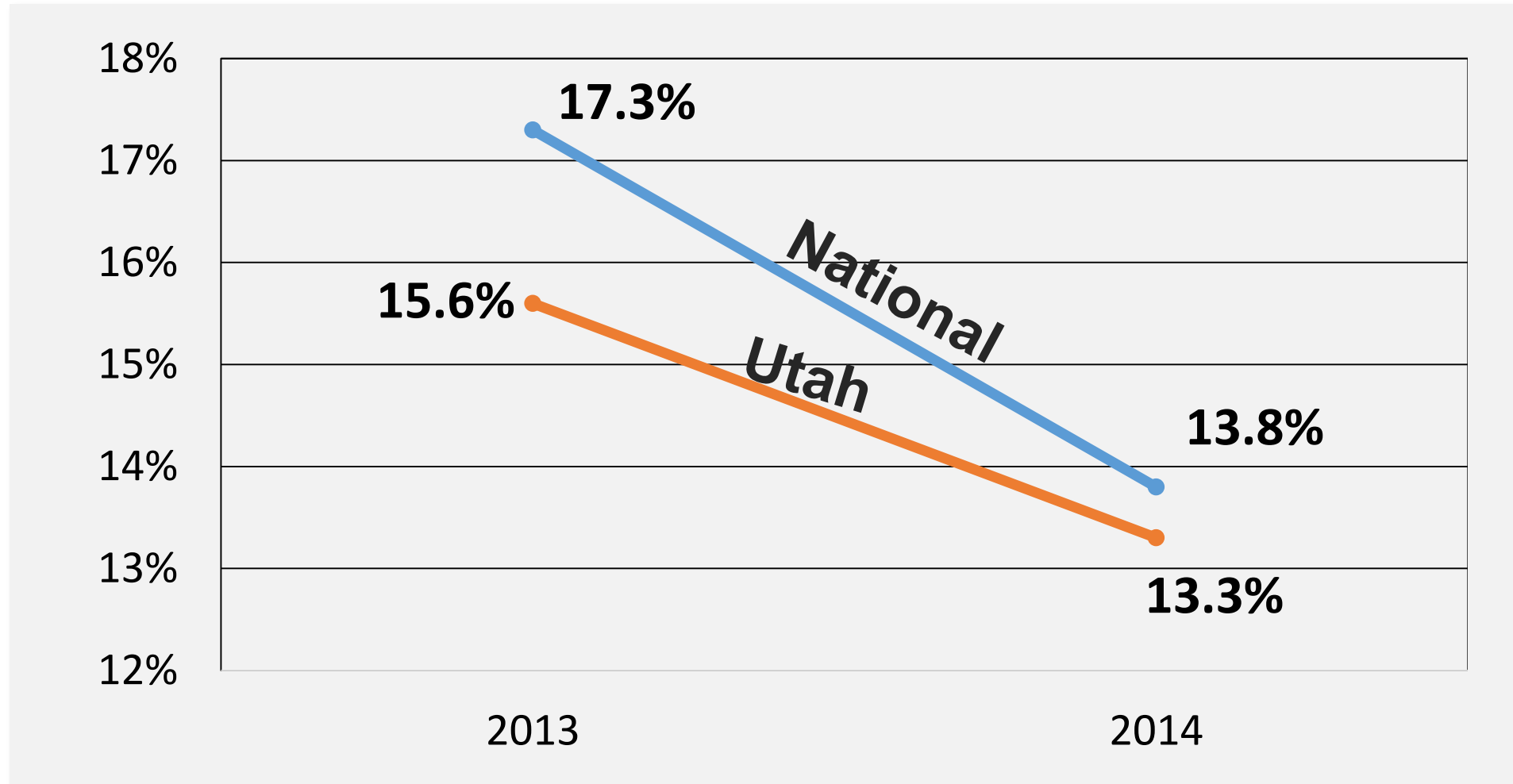
May 2015

# The U.S. uninsured rate is down 30% since 2013

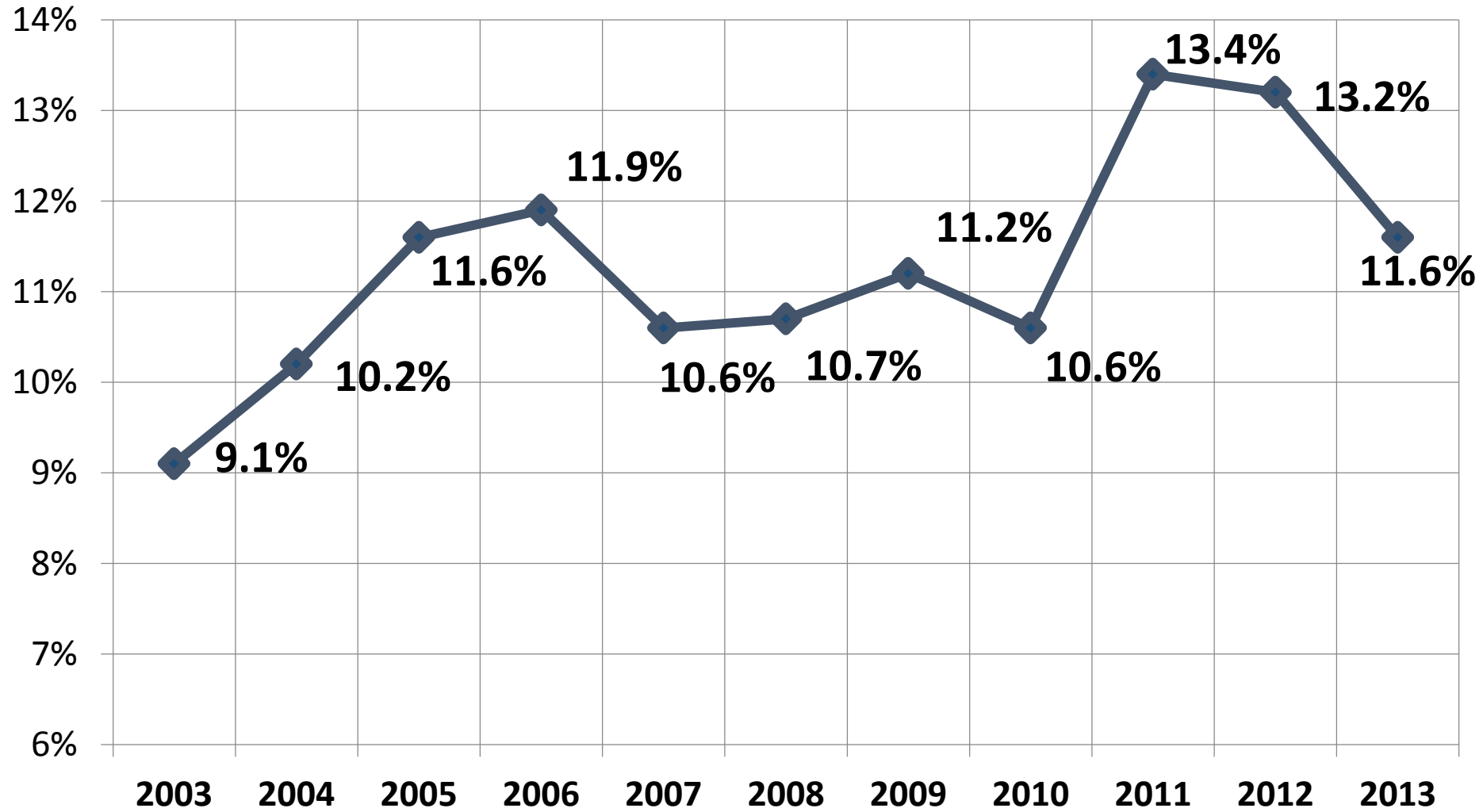


Source: Gallup Healthways Well-Being Index (4/12/15); (<http://www.gallup.com/poll/182348/uninsured-rate-dips-first-quarter.aspx>)

# Between 2013 and 2014, Utah's uninsured rate dropped from 15.6% to 13.3%



# Estimated Percentage of Utahns Who Lacked Health Insurance Coverage (2003-2013)



Sources: Utah Healthcare Access Survey (UHAS), 2003-2008; Utah Behavioral Risk Factor Surveillance System (BRFSS), 2009-2013; Office of Public Health Assessment, Utah Department of Health

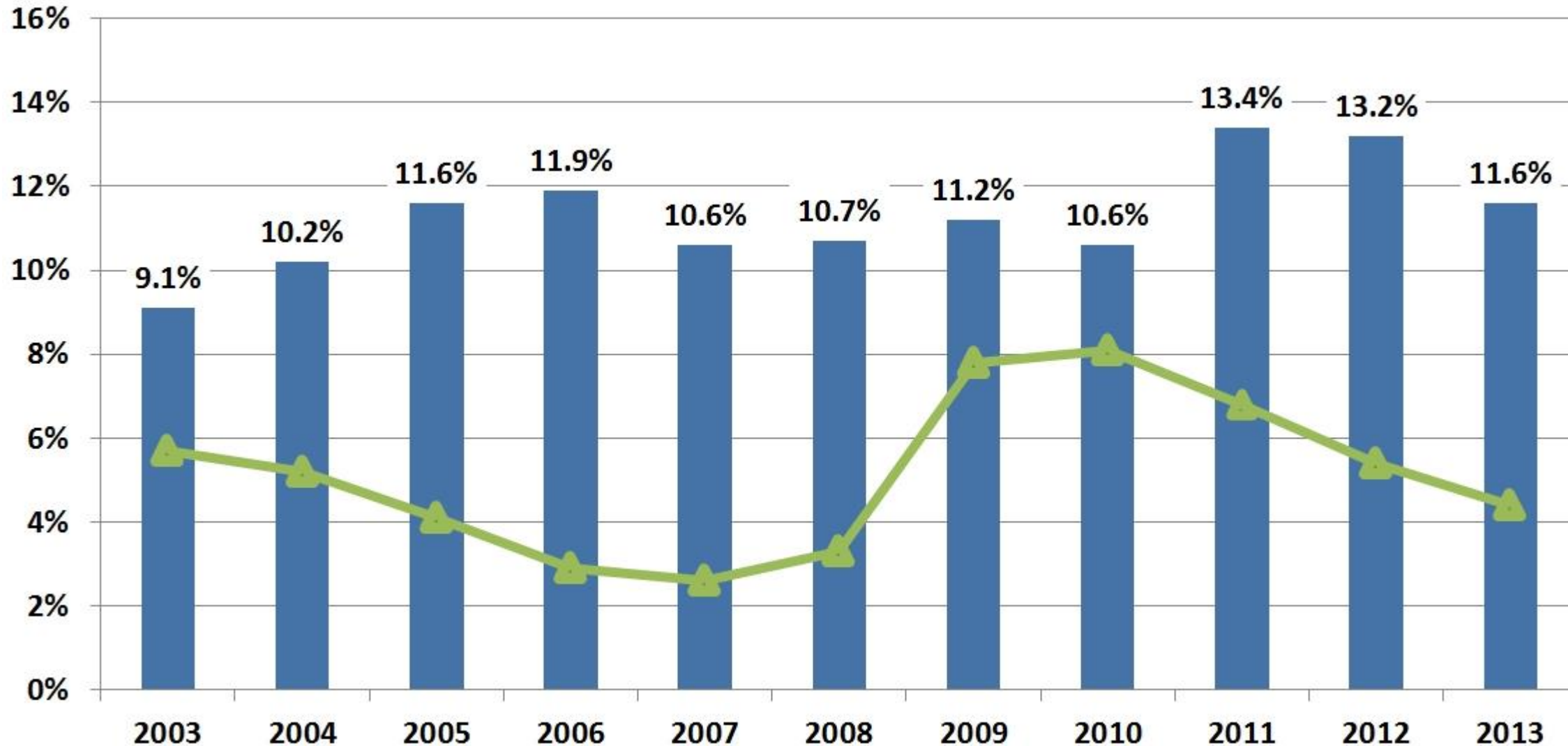
# Estimated Number and Percentage of Utahns Who Lacked Health Insurance 2003-2013

YEAR	UT Uninsured Rate	UT Pop. Size	# Uninsured in UT	UT Unemployment Rate
2003	9.1%	2,354,775	214,500	5.7%
2004	10.2%	2,469,230	251,400	5.2%
2005	11.6%	2,528,926	292,800	4.1%
2006	11.9%	2,582,371	306,500	2.9%
2007	10.6%	2,699,554	287,200	2.6%
2008	10.7%	2,781,954	298,200	3.3%
2009	11.2%	2,800,089	314,300	7.8%
2010	10.6%	2,847,897	301,700	8.1%
2011	13.4%	2,817,222	377,700	6.8%
2012	13.2%	2,855,430	376,600	5.4%
2013	11.6%	2,900,872	335,700	4.4%

Uninsured Sources: Utah Healthcare Access Survey (UHAS), 2003-2008; Utah Behavioral Risk Factor Surveillance System (BRFSS), 2009-2013; Office of Public Health Assessment, Utah Department of Health

Unemployment Source: 2003, 04: <http://www.infoplease.com/ipa/A0931330.html>; 2007: <https://jobs.utah.gov/wi/pubs/em/annualreport/10annual/table31.pdf>; All other years: <http://www.dlt.ri.gov/lmi/laus/us/annavg.htm>

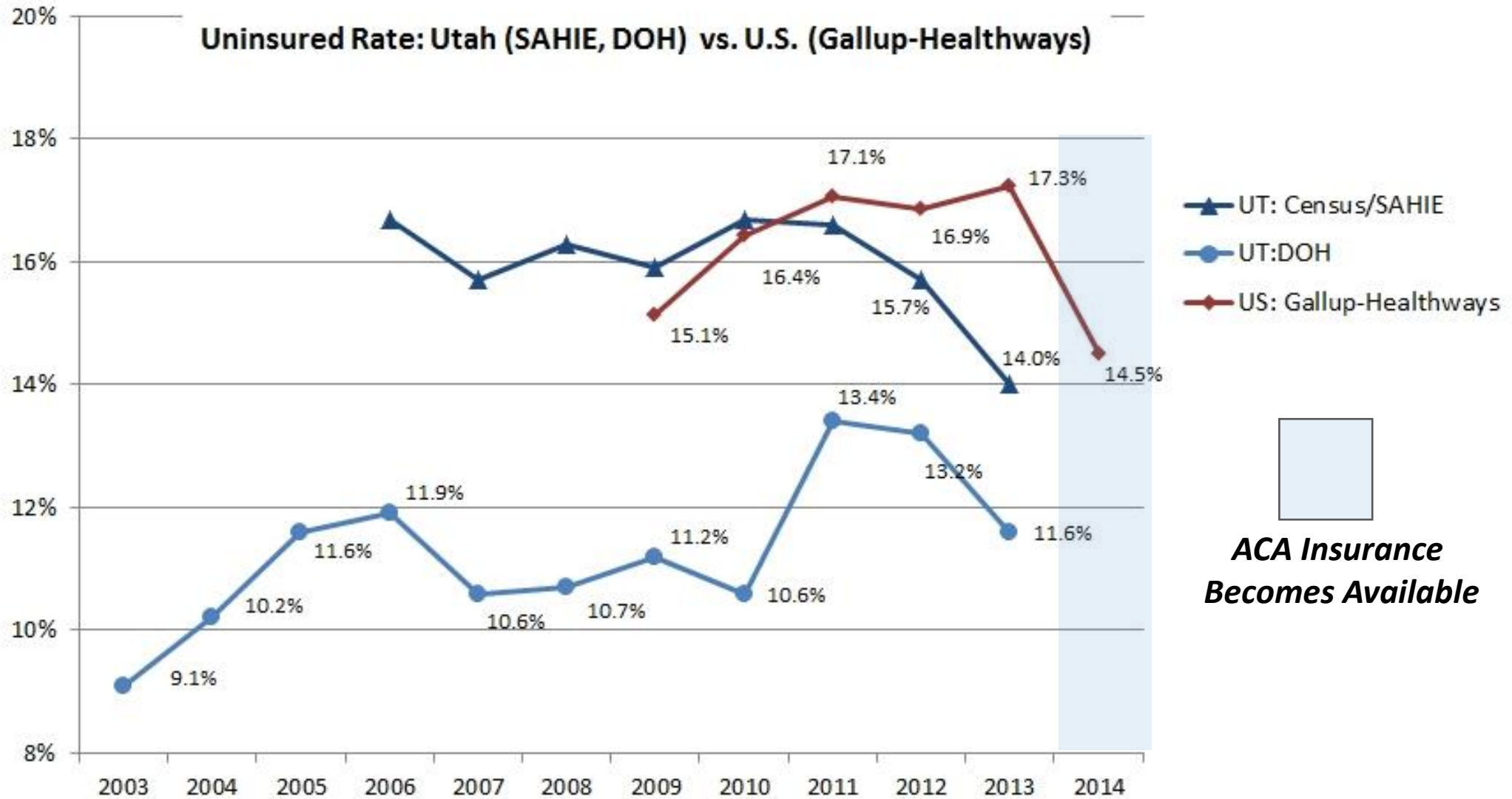
# Utah Uninsured Rate Compared to Unemployment Rate (2003-2013)



Uninsured Sources: Utah Healthcare Access Survey (UHAS), 2003-2008; Utah Behavioral Risk Factor Surveillance System (BRFSS), 2009-2013; Office of Public Health Assessment, Utah Department of Health

Unemployment Source: 2003, 04: <http://www.infoplease.com/ipa/A0931330.html>; 2007: <https://jobs.utah.gov/wi/pubs/em/annualreport/10annual/table31.pdf>; All other years: <http://www.dlt.ri.gov/lmi/laus/us/annavg.htm>

# Three Ways to Look at the Uninsured Rate: Utah vs. National



Sources: (1) Utah Healthcare Access Survey (UHAS) (2003-08); Utah Behavioral Risk Factor Surveillance System (BRFSS) (2009-13); (2) U.S. Census Bureau/SAHIE (2006-13); (3) Gallup-Healthways Well-Being Index (2008-14)